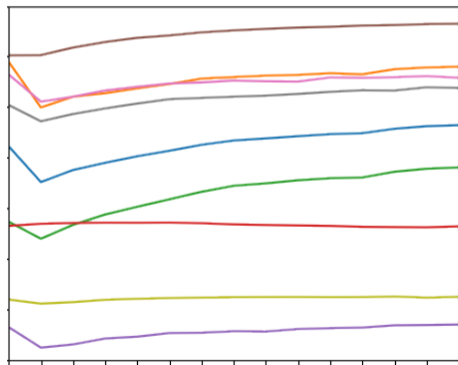


Syntactic Interchangeability in Word Embedding Models

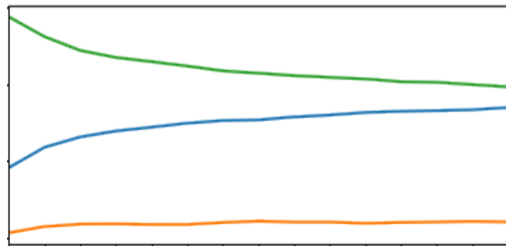
Daniel Hershcovich, Assaf Toledo, Alon Halfon & Noam Slonim

IBM Research

Word embeddings trained with larger context windows —
capture semantic similarity better *but* are less sensitive to part-of-speech (POS)



Similarity benchmark scores



Nearest neighbors by POS